

.Trasteel WEAR PARTS



**Profitability
on Chain**

.Trabber

Trasteel WEAR PARTS

Your machine got
a thing for Trasteel

Trasteel Wear Parts is a leading brand of wear parts for Mining and Construction Machinery Equipment. This brand was created to offer an excellent product, taking care of every detail, from design and selection of materials to production processes. That is the definition of **Trasteel Wear Parts**.

The main goal of this **global brand** is to combine design and technology to offer the best performance on the field.

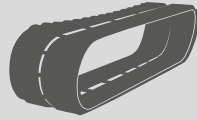
One of the key products of **Trasteel Wear Parts** is undercarriage, offering two well differentiated lines:

• Trabber

Rubber tracks and pads for Mini and Midi excavators

• Trasteel TRACK

All kind of undercarriage parts for excavators, bulldozers and every other equipment with track systems.



Trabber offers a full range of rubber tracks suitable to most brands on the market.

Trabber rubber tracks are manufactured with the best materials and the most advanced

production processes, resulting in high-quality products. On this way, the wear life of the product is increased and the maintenance costs are minimized.

GL System



GL System is based on a reliable and proven technology that, along with its tested characteristics, results in higher productivity and greater profitability to meet all our customers' expectations.

AVT System



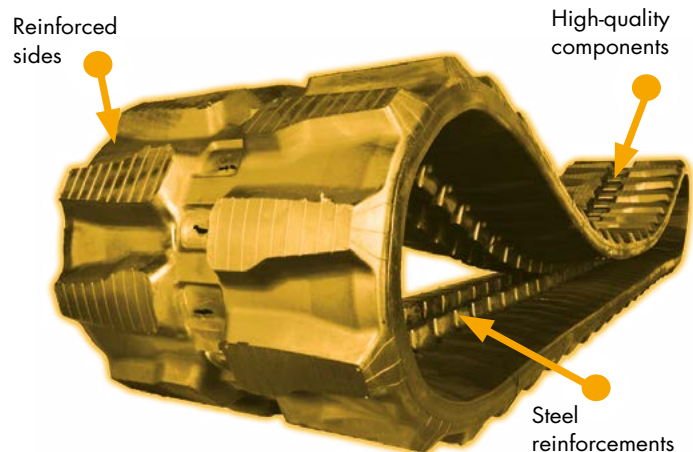
AVT System (Anti-Vibration Track System) is a new technology integrated in Trabber rubber tracks. With this system, the track roller is always leaned on the track's DIAMOND shaped metal core, thereby avoiding or significantly reducing any vibrations during movement.

Other benefits:

- Greater comfort for the operator
- Lower wear of the equipment
- Minimization of maintenance costs
- Reduction of the environmental impact
- Noise mitigation in the workplace

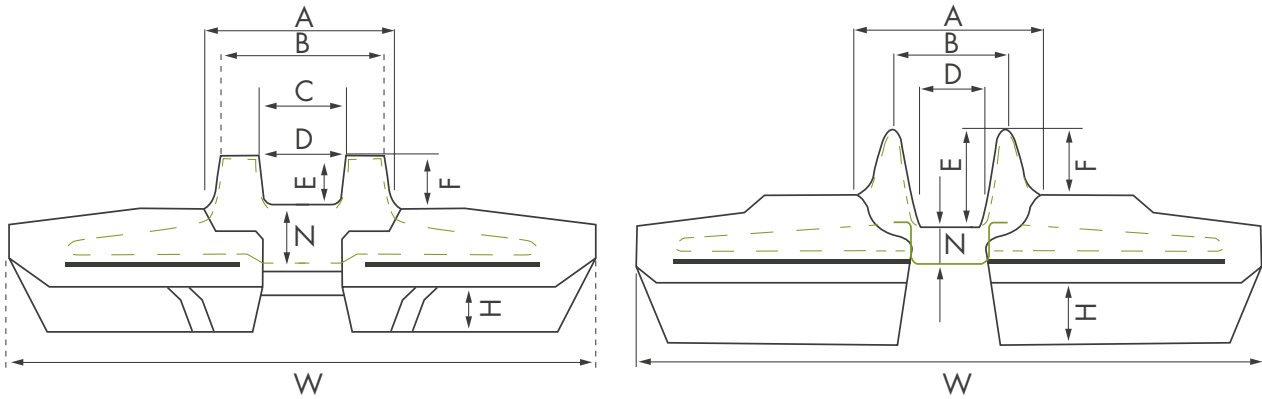
Rubber tracks structure

- Greater flexibility of the track (avoiding premature breakages)
- Reinforced sides (avoiding lateral cuts)
- High-quality rubber and larger contact surface (greater durability and wear resistance)
- High-quality steel track cord
- Forged track's metal core

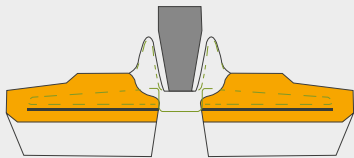




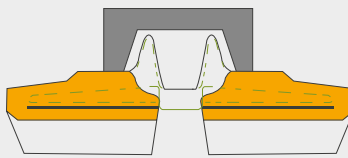
RUBBER TRACK IDENTIFICATION



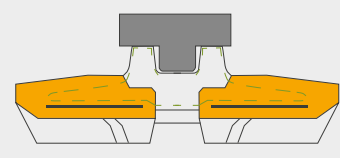
TRACK ROLLER TYPES



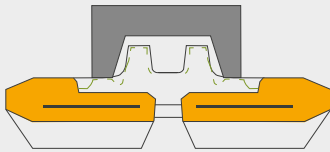
A



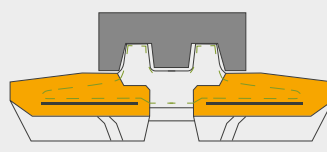
B



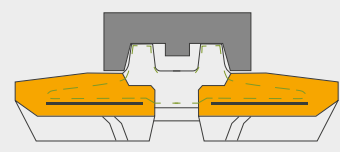
C



D



E



F

Spec. & Type	A	B	C	D	E	F	H	Guide rail
150 x 60	64	55	34	22	24	23	15	A.B
150 x 72	65	50	38	23	30	30	16	A.B
180 x 60	62	49	38	26	27	27	22	A.B
180 x 72	65	50	38	25	29	31	15	A.B
180 x 72 K	60	53	33	24	21	16	16	B
200 x 72	65	50	36	26	29	24	15	A.B
200 x 72 K	65	51	39	22	30	27	16	B
230 x 48	72	64	32	21	26	23	23	C
230 x 72	80	55	41	24	27	29	14	A.B
250 x 47	69	60	29	24	22	20	20	
250 x 48,5	66	58	32	24	20	24	24 (18)	D.E
250 x 72	80	62	41	26	29	30	17	A.B
260 x 96 Y	70	61	31	26	23	23	22	D
300 x 52,5 N	83	72	36	32	26	19	23	C.E
300 x 52,5 W	94	84	46	43	24	20	24	C.E
300 x 52,5 K	83	76	36	33	27	25	19	D
300 x 53	86	78	36	33	26	19	18	D
300 x 55,5	76	72	36	32	27	24	24	D

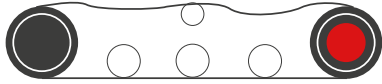


Spec. & Type	A	B	C	D	E	F	H	Guide rail
300 x 109 W	92	80	46	38	28	26	24	C.E
300 x 109 N	78	66	36	31	27	29	25	C.E
300 x 109 K	85	74	34	226	25	30	25	C
320 x 54	82	70	40	32	23	21	19	C.E
320 x 84	100	80	63	46	48	38	24	C
320 x 86	80	68	52	35	44	34	25	C.E
320 x 100	84	68	52	34	40	33	24	A.B
320 x 106 Y	78	68	36	30	32	29	24	D
350 x 52,5	88	78	49	41	27	24	22	A.B
350 x 75,5	98	88	45	36	26	30		D
350 x 109	88	79	45	41	27	24	23	C.E
370 x 107	90	82	42	37	29	29	24	D
400 x 72,5 Y	94	83	43	38	28	26	24	D
400 x 72,5 N	90	88	44	40	27	25	22	E
400 x 72,5 W	108	100	58	48	25	24	24	E
400 x 72,5 K	87	76	46	40	29	29	24	E
400 x 75,5	98	88	42	37	27	28	24 (18)	D
400 x 86	100	79	64	46	44	34	32	C
400 x 107 Y	90	82	44	39	29	29	24	D
400 x 142 K	90	80	34	28	30	28	24	C.E
400 x 144 Y	101	90	44	35	30	29	25	C.E
450 x 71	110	97	52	41	30	26	30	C
450 x 73,5	109	100	52	41	32	30	28	C
450 x 76 K	122	110	58	52	30	29	30	C
450 x 81 N	114	102	54	42	32	29	26	C
450 x 81 W	136	120	73	63	30	34	24	C
450 x 83,5 K	115	101	56	44	25	24	24	C
450 x 83,5 Y	116	102	50	40	24	25	30	D
450 x 84	102	81	65	44	47	33	28	A
450 x 86	104	82	68	46	47	35	28	C
450 x 90 Y	80	67	53	40	37	35	40	A
450 x 90	84	66	52	38	43	42	19	A
450 x 100	102	80	64	46	51	47	38	A.B
450 x 163 K	114	96	54	43	31	29	30	D
485 x 92	134	126	78	64	32	30		D
500 x 92 W	132	118	64	58	28	29	26	C
550 x 90	82	68	53	39	37	27,5	45	A
600 x 100	112	84	64	45	60	52	38	B
600 x 150	165	125	105	62	70	63	55	B
700 x 100	112	90	70	53	74	60	35	B
750 x 150	170	128	92	62	65	45	39	B
800 x 150	143	94	75	62	54	40	39	B



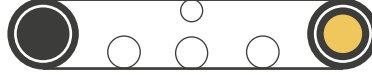
RUBBER TRACK TENSION PROBLEMS

• Tension loss



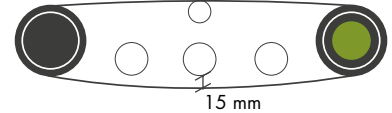
Too slack tension can result in great damage for the steel reinforcement and the steel track cord.

• Excessive tension



Too high tension can increase wear and cause breakages on the steel track cord.

• Optimal tension



During the first 10-20 hours, tension must be lower to be increased later to reach an optimal tension.

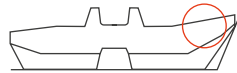
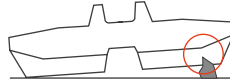
DAMAGE PREVENTION AND IDENTIFICATION

CUTS, CRACKS AND BREAKAGES

A/ Cuts or cracks on the rubber track

Prevention:

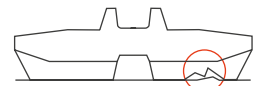
- Avoid driving on sharp or steep terrains or narrow paths.
- Avoid driving long distances as far as possible.
- Control tension on a continuing basis.
- Avoid contact with walls, sharp edges or ditches.



B/ Breakages of the steel track cord

Prevention:

- Control tension and ensure adequate tension maintenance.
- Drive carefully on sharp terrains and avoid sudden swing

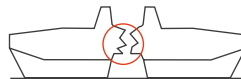


C/ Cuts on the lug

Prevention:

When working on terrains such as the forest, unpaved roads, construction sites and others; it is advisable to:

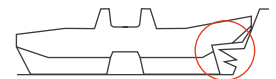
- Drive carefully
- Avoid excessive speed and heavy loads



D/ Cracks and tears on the side of the track

Prevention:

To avoid an excessive impact on the sides of the tracks, drive very carefully on the abovementioned terrains.



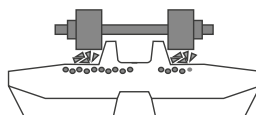
ABRASION

E/ Abrasion inside the track

Prevention:

It is advisable to wash inside the track to avoid pebbles or any other material from adhering to the rubber track.

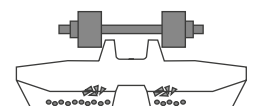
It is recommended, particularly after working on wet zones.



F/ Abrasion of the lugs

Prevention:

It is advisable to use any other transportation to move the equipment during long journeys. Besides, abrasion can be drastically reduced if sudden turns or aggressive driving are avoided.



Rubber pads

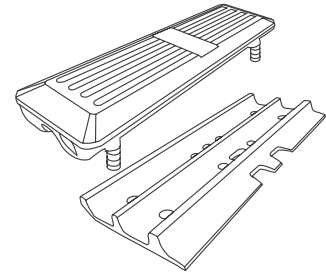
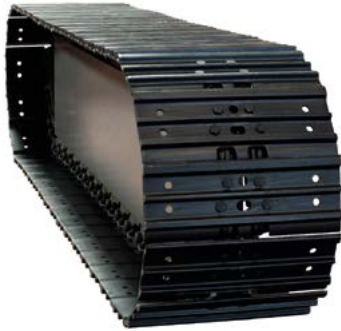


Trabber

Trabber offers three different versions of rubber pads to be assembled to the steel track shoes:

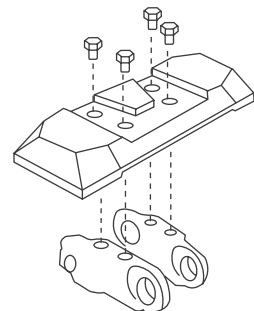
STEEL TRACK + BOLT-ON TRACK PAD

Bolt-On is directly assembled to the steel track shoe, increasing versatility.



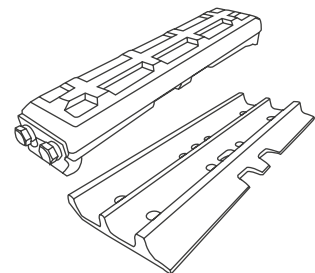
STEEL TRACK + CHAIN-ON TRACK PAD

Chain-On is directly assembled to the track link, offering greater robustness and resistance.



STEEL TRACK + CLIP-ON TRACK PAD

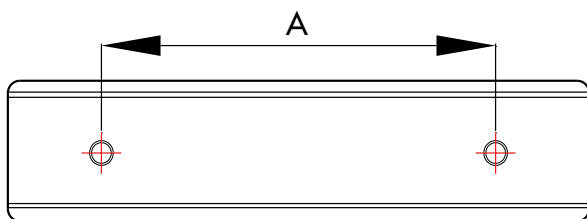
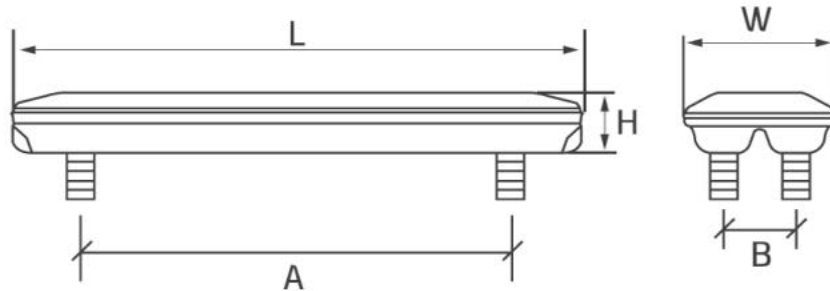
Clip-On makes it possible to assemble a rubber track for any type of equipment.



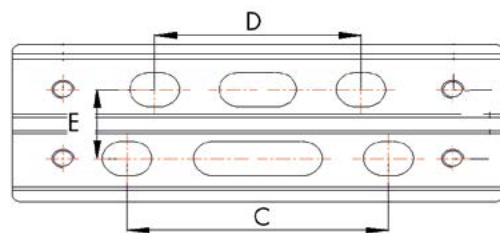


BOLT-ON Pads

Trabber reference	Pitch	L	W	H	A	B	C	D	E	Type	Ø Screw
D90-230	90	230	68	35	150	-	-	-	-	1	2 x M12
D101-300	101	300	68	38	200	-	-	-	-	1	2 x M12
D101-350	101	350	68	38	250	-	-	-	-	1	2 x M12
D135-400	135	400	108	35	300	46	99	72	46	2	4 x M12
D135-400B	135	400	98	39	300	46	99	72	46	2	4 x M12
D135-400YR	135	400	105	35	300	46	176	146	46	2	4 x M12
D140-450V	140	450	102	44	350	53	83	83	52	2	4 x M12
D154-450	154	450	124	44	350	58	90	82	58	2	4 x M14
D154-450YR	154	450	124	44	350	58	148	134	57	2	4 x M14
D1556-300	155.6	300	132	52	220		104,8	88,9	54,8	2	4 x M14
D1556-320	155.6	320	132	52	220		104,8	88,9	54,8	2	4 x M14
D171-500	171	500	135	52	400	60,32	97	105	59	2	4 x M16
D175-500	175	500	128	54	400	57	97	104,5	58	2	4 x M16
D190-600	190	600	146	72	400	69	122	156	68	2	4 x M20
D203-600	203	600	165	80	600	76	160	135	75	2	4 x M16
D203-800	203	800	165	80	588	76	160	135	75	2	4 x M16



TYPE 1

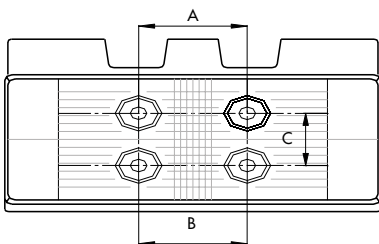
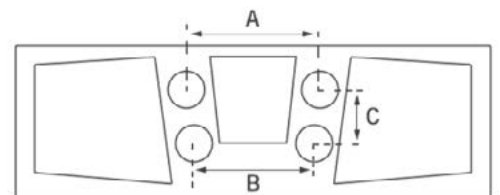
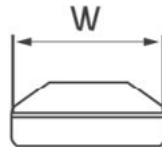
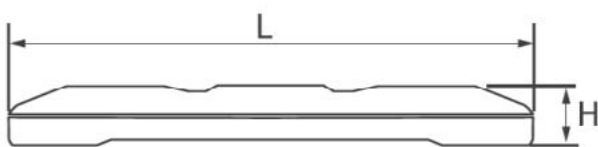


TYPE 2

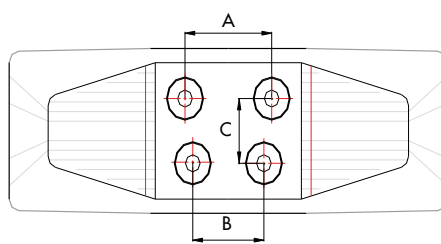


CHAIN-ON Pads

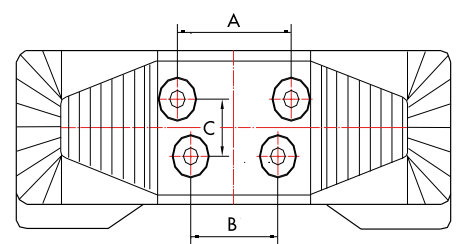
Trabber reference	Pitch	L	W	H	A	B	C	Type	Ø Screw
CT 1556-250	155,6	250	185	45	89	89	57,15	1	4 x M12
CT 1556-300	155,6	300	185	45	89	89	57,15	1	4 x M12
CT 1556-307V	155,6	307	164	52	104,8	88,9	54,8	1	4 x M14
CT 135-400 GC	135	400	125	61	94	64	46	2	4 x M12
CT 135-400 GDW	135	400	125	61	104	80	46	2	4 x M12
CT 140-450 MB	140	450	125	70	86	86	52	2	4 x M14
CT 154-450 MA	154	450	145	78	89	73	57	2	4 x M14
CT 154-450 MCW	154	450	145	78	90	90	55	2	4 x M14
CT 171-500 MA	171	500	160	87	108	108	60,3	2	4 x M16
CT 171-600 MA	171	600	160	87	108	108	60,3	2	4 x M16
CT 175-600 MB	175	600	160	87	102,4	86,4	57	2	4 x M16
CT 190-600 MA	190	600	178	92	160,4	124,4	62	2	4 x M20
CT 190-600 MB	190	600	178	92	160,4	124,4	62	2	4 x M18
CT 190-600 MC	190	600	178	92	155,6	119,6	69	2	4 x M20
CT 135-400 GD 2	135	395	144	58	104	80	46	3	4 x M12
CT 154-450 MA 2	154	450	150	74	89	73	57	3	4 x M14
CT 171-500 MA 2	171	500	180	86	108	108	60,3	3	4 x M16
CT 190-600 MA 2	190	600	200	99	160,4	124,4	62	3	4 x M20
CT 190-600 MC 2	190	600	200	99	155,6	119,6	69	3	4 x M20



TYPE 1 Asphalt Paver



TYPE 2

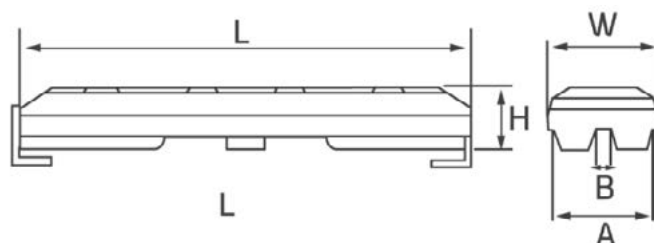


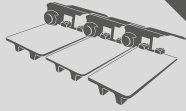
TYPE 3



CLIP-ON Pads

Trabber reference	Pitch	L	W	H	A	B
YC-101-300E	101	300	61	41,5	-	-
YC-135-400E	135	400	110	60	82	10
YC-154-450E	154	450	128	65	106	10
YC-171-500E	171	500	130	57	114	14
YC-171-600E	171	600	130	57	114	14
YC-175-500E	175	500	127	64	104	11
YC-175-600E	175	600	127	64	104	11
YC-190-600E	190	600	148	83	112	14
YC-190-800E	190	800	148	83	112	14
YC-203-600E	190	600	164	90		





Trasteel Track offers a wide range of undercarriage parts for all type of equipment with track systems.

- Mini and Midi excavators
- Excavators
- Bulldozers
- Asphalt pavers
- Drill rigs

All **Trasteel Wear Parts** are tested and guaranteed to offer an optimal performance and a superior durability.

Thanks to our permanent stock, **Trasteel Track** undercarriage parts are always available so

that our customers can have any replacement parts needed at any time. All part of **Trasteel Wear Parts** commitment to make your equipment more profitable.

- Track links
- Track shoes
- Track rollers
- Top rollers
- Sprockets
- Idler
- Track bolts



.Trasteel WEAR
PARTS

