

Trasteel WEAR PARTS

The background of the page is a grayscale photograph of a large, complex industrial machine, likely a conveyor system or a large-scale testing rig. Five silver, conical nozzles or probes are arranged in a diagonal line across the lower half of the image. The machine's surface is covered with various components, including pipes, bolts, and structural plates. The overall aesthetic is industrial and technical.

ENGLISH

Trasteel Wear Parts is a global benchmark in spare parts for the machinery employed in public works, construction and mining. Since its inception, this brand has aimed at providing an excellent final product.

To this end, a great deal of attention has been paid to all aspects, starting from the design to the selection of raw materials and production processes. This is what defines **Trasteel Wear Parts**.

The primary objective of this global brand is to combine design and technology to offer a maximum profitability in the field.



Wear components

Ground Engaging Tools (GET's), blades & cutting edges and wearing protection elements for excavators, loaders, bulldozers, etc.



Undercarriage

Undercarriage components for all kind of tracked equipment, both steel for bulldozers and larger excavators and rubber tracks and pads for mini & midi excavators.

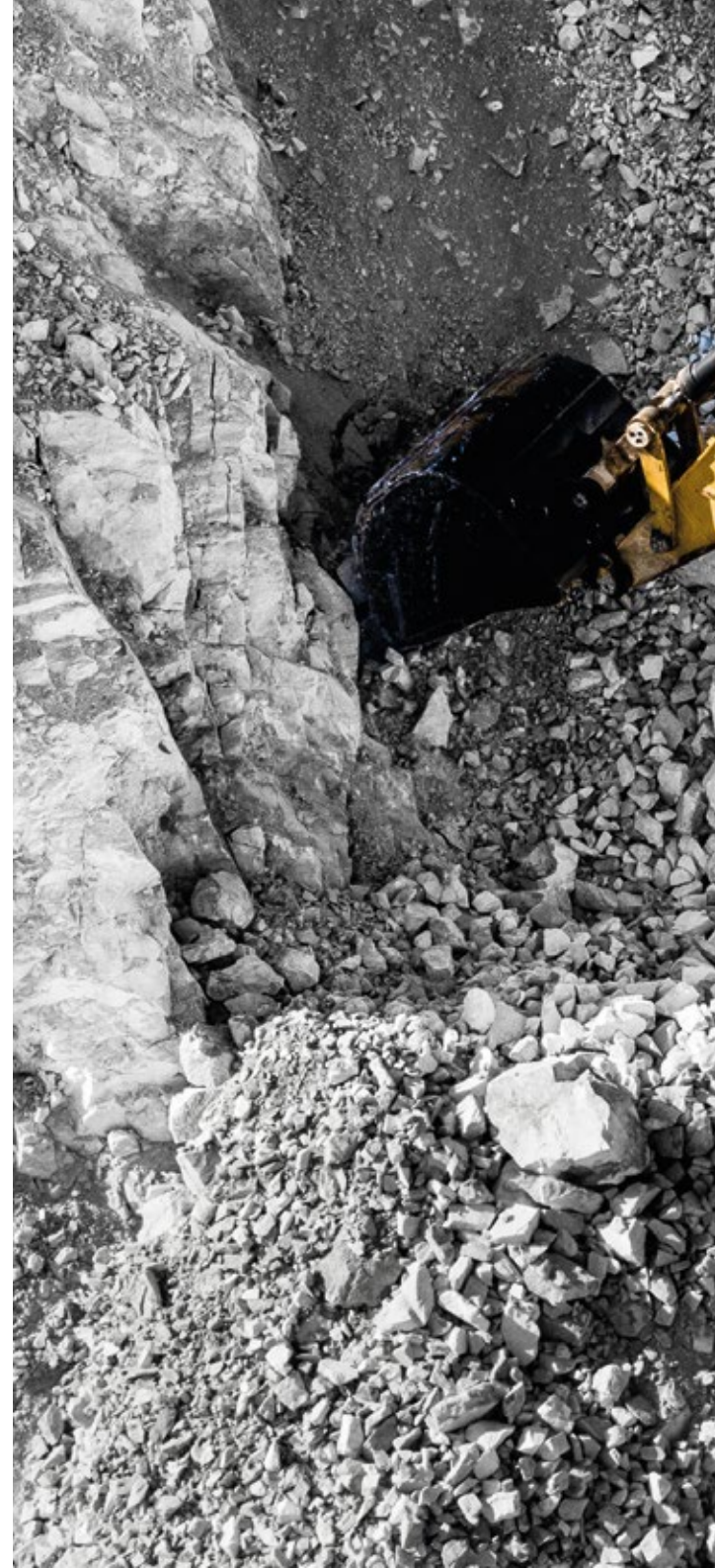


Attachments

Equipment rendering any machine efficient, as quick-hitches and buckets, forestry, demolition & recycling equipment, or hydraulic hammers.



Other identities and/or trademarks referred to in this publication are the registered marks of the entities noted herein. The use of any trademarks of others than Trasteel are solely and exclusively for identification, informational, comparative, and descriptive purposes. Trasteel is not affiliated with any owner of such registered marks and does not make, use, or sell any products manufactured by any such entity identified in this publication.





Innovation, design, technology and performance are the four main features that define **Trasteel Elite**.



EXCAVATOR TEETH



PENETRATION ELITE P ●
High penetration tooth for general purposes.



HEAVY DUTY ELITE PHD ●
HD self-sharpening tooth for outstanding penetration.



TIGER ELITE V ●
Highly penetrating tooth for compact ground.



TWIN ELITE TU ●
Double penetration tooth for compact ground.



LOADER TEETH



LOADER ELITE L ●
Tooth for general work with loose materials.



LOADER HEAVY DUTY ELITE LHD ●
Reinforced tooth for loading highly abrasive material and rocks.



BACKHOE TEETH



TOP PIN ELITE L ●
Tooth for general purposes.



BOLT-ON ELITE L ●
Bolt-on tooth for general purposes.



EXCAVATOR AND LOADER ADAPTERS

SOLID ADAPTERS AND WITH WEAR CAP ●
Reinforced solid adapters designed to avoid breakages under highly severe working conditions.



RIPPER TEETH

RIPPER SM ●
Highly reinforced and self-sharpening ripper tooth.



● ELITE Optimised designs

Adaptable for most of the systems on the market



CAT -J



CAT -K



RIPPER CAT & KOM



SUPER V



KOMATSU



DOOSAN



HYUNDAI



H&L



VOLVO



K-MET



UNI-Z

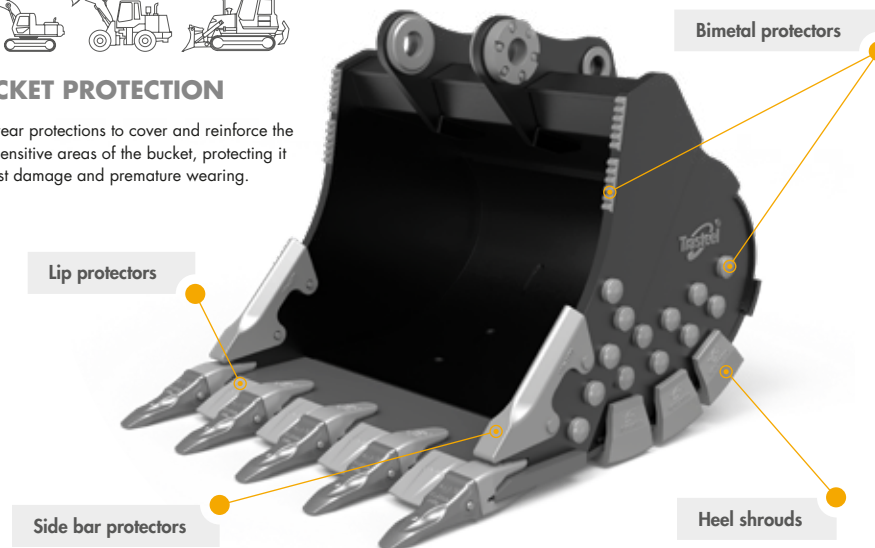


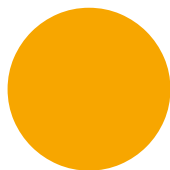
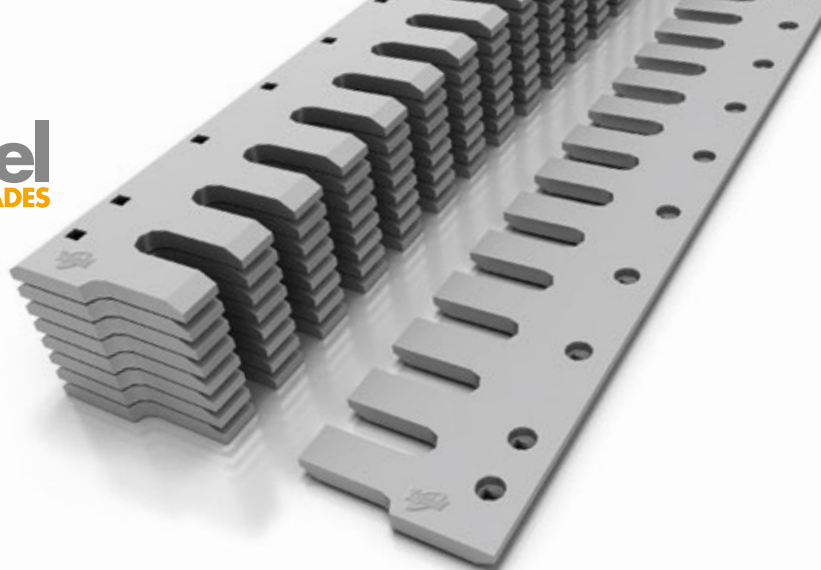
JCB



BUCKET PROTECTION

Anti-wear protections to cover and reinforce the most sensitive areas of the bucket, protecting it against damage and premature wearing.

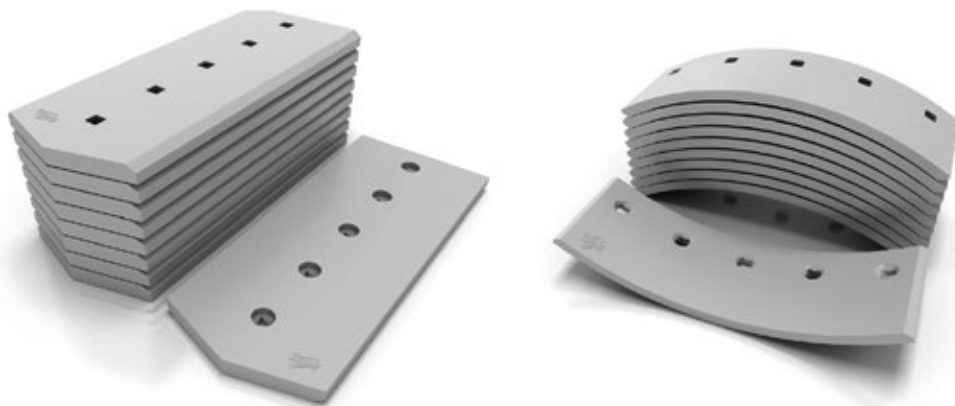




Available for all major brands:
CATERPILLAR, KOMATSU, VOLVO,
JOHN DEERE, CASE

Cutting edges, blades and end bits for bulldozers, motor graders, loaders, scrapers, etc.

Exhaustive quality controls take place regularly to verify the mechanical performance of our steels in external laboratories certified by ENAC (Spanish National Accreditation Bureau). Most controls greatly exceed our specifications.



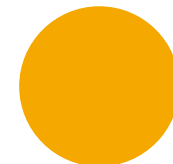
Trasteel Tools offers our customers two lines of tools for demolition and milling.

Tools for Hydraulic Hammers

Manufactured with rigorous and demanding quality controls common to all **Trasteel Wear Parts**, delivering excellent results.



- Conical
- Chisel
- Blunt
- Pyramidal



Milling Bits

The **Trasteel Tools** Bits follow and meet all our own quality requirements. We offer a full bits range for different works as milling for rock, concrete and asphalt with exceptional performance on all of them.

Our range of cutting tools covers diameters from 10 mm to 30/38 mm/mm, each applying different lengths and diameters on Tungsten Carbide tip.



Trabber

Trabber offers a wide range of rubber tracks that are suitable to most machinery brands in the market.

Trabber tracks are manufactured with the best raw materials and by following the most advanced production processes, making it an excellent-quality final product. This further extends the lifespan of the product, consequently minimising the maintenance costs.



STRUCTURE OF THE RUBBER TRACK

Greater flexibility of the track

Prevention of premature breakages

Reinforced sides

Prevention of cuts

Superior-quality rubber

Increased durability

Better contact surface

Improved wear resistance

High-quality steel track cord with protection

Better tensile strength

Forged sprocket teeth

Lower incidence of breakage

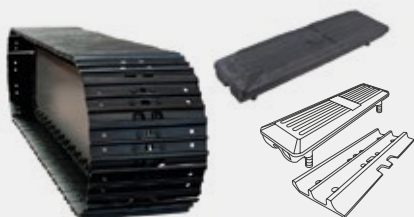
Rubber Pads

Trabber also offers shoes to be fitted on a steel track in three different versions:

BOLT-ON | CHAIN-ON | CLIP-ON



STEEL TRACK + BOLT-ON TRACK PAD



STEEL TRACK + CHAIN-ON TRACK PAD



Trasteel TRACK

Trasteel Track offers an extensive assortment of undercarriage components for all types of equipment with track system.

- Mini and Midi Excavators
- Excavators
- Bulldozers
- Asphalt Pavers
- Drilling Machines

All the parts are tested and guaranteed to deliver optimal performance and superior durability.



BULLDOZER AND EXCAVATOR UNDERCARRIAGE



- Lubricated and greased tracks
- Standard and high-performance shoes
- Track and top rollers
- Sprocket segments and full segments
- Front idler with or without brackets
- Nuts and bolts

In accordance with **Trasteel Wear Parts** of creating a global supplier to provide the best components, we propose a professional range of **attachments** for all types of construction, maintenance, demolition and handling of materials.

This range stands out, offering a maximum performance and efficiency to each particular kind of machine.

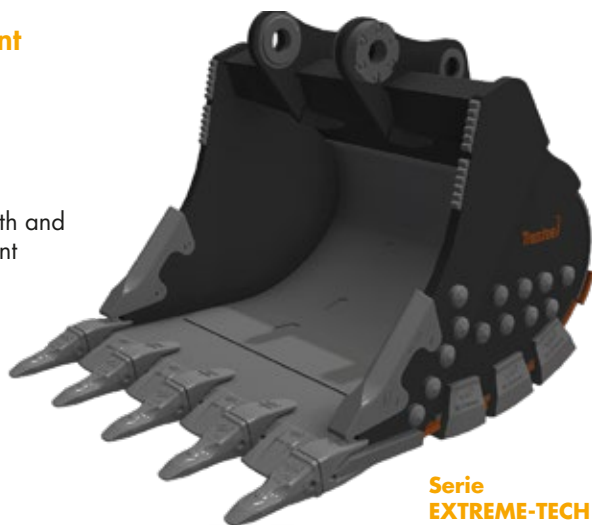
In a competitive global economy, getting the most out of every hour of work is crucial, and **Trasteel Wear Parts** and its range of **Trasteel Tech** attachments will help you to achieve it.



**Serie
ECO-TECH**

Excavator Equipment

- 1.- Excavation and trenching buckets
- 2.- Skeleton Buckets for sorting material
- 3.- Cleaning Buckets with and without TILT movement
- 4.- Trapezoidal Buckets for ditches
- 5.- Rippers
- 6.- Quick Couplers mechanical and hydraulic
- 7.- TILT and ROTOTILT equipment for articulation



**Serie
EXTREME-TECH**

Front Loaders Equipment

- 1.- Loading Buckets light materials
- 2.- Heavy Duty Buckets for big loaders
- 3.- High dump Buckets for different materials on port operations
- 4.- Forks for loading logs
- 5.- Forks for loading blocks on stone quarries
- 6.- Quick Couplers for efficient and safe changes

1 Maintenance cost savings

2 Up to 40% more power

3 Protects the excavator

4 Easy to repair

5 Ease of use and comfort



Our hammers deliver much more power, which increases the hourly output of the machine, as well as offering very comfortable working conditions for the operator, contributing towards increased productivity. All these benefits are based on 5 main features exclusives of **Trasteel Tech** hammers.





www.trasteelwearparts.com

